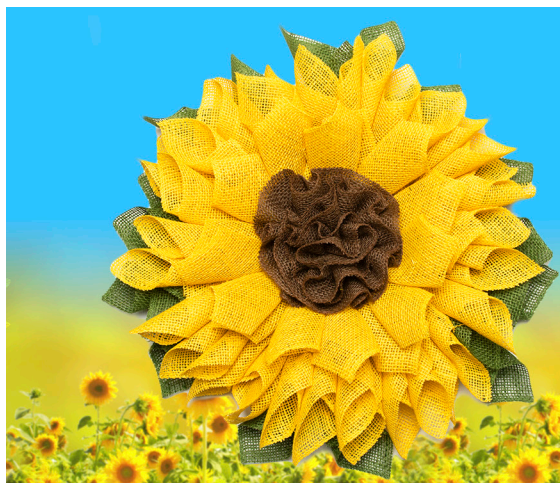


SHIMMERING SUNFLOWER



Jesus, the Word of God, became a man to bring light and life to all (John 1:14). Just as the sunflower faces toward the sun in order to grow, let's look toward Jesus every day!

YOU WILL NEED:

- Yellow Burlap Ribbon, 5½" wide
- Brown Burlap Ribbon, 5½" wide
- Green Burlap Ribbon, 5½" wide
- 12" Wire Wreath Form
- 100 4" Cable Ties
- 8-10 11" Cable Ties
- Large Needle
- Scissors
- Golden Glitter
- Cutters



DIRECTIONS:

 <p>1. Cut two squares from the green ribbon. Roll them diagonally into a cone and pinch them together with your fingers at the narrow end. Clamp the ends together with a tie.</p>	 <p>2. Slide another tie underneath the tie on the two cones.</p>	 <p>3. Make about 8-10 green double cones. Attach them to the outside hoop of the wire wreath with the ties, evenly distributing them around the wreath.</p>	 <p>4. Make about 15-20 double petals with yellow burlap ribbon.</p>	 <p>5. Attach them to the inside hoop of the wire wreath with ties, evenly distributing them.</p>	 <p>6. Make 8 more double petals with yellow burlap ribbon. Use ties to fasten them together in a circle.</p>
 <p>7. Lay the circle of double yellow petals in the center of the wreath. Attach it to the wreath with 4 long ties.</p>	 <p>8. Cut about 40" from the brown ribbon. Fold the ribbon in half. Pulling two threads, gather the ribbon into a fan-shape.</p>	 <p>9. Pull the same threads at the other end to make the ribbon into a spiral. Using a large needle and the two gathering threads, secure the spiral.</p>	 <p>10. Insert 4 long ties into the middle underneath the spiral.</p>	 <p>11. Lay the spiral in the center of the wreath with ties facing down. Attach it to the wreath with 4 long ties. Cut off any excess plastic from ends of the ties.</p>	 <p>12. Flip the wreath over. Sprinkle gold glitter on the sunflower. Each time you see a beautiful sunflower, remember to keep looking to Jesus!</p>